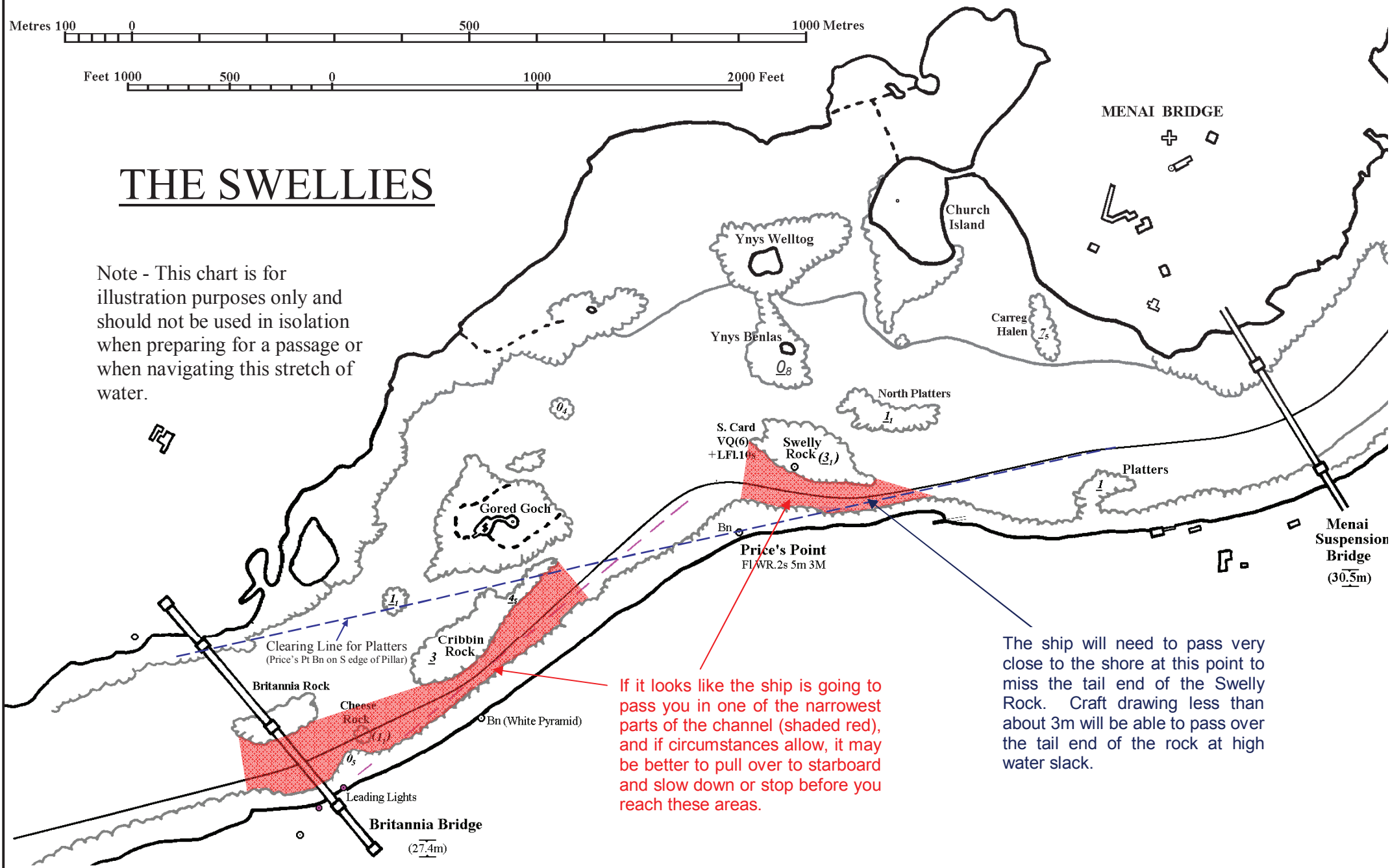


THE SWELLIES

Note - This chart is for illustration purposes only and should not be used in isolation when preparing for a passage or when navigating this stretch of water.



If it looks like the ship is going to pass you in one of the narrowest parts of the channel (shaded red), and if circumstances allow, it may be better to pull over to starboard and slow down or stop before you reach these areas.

The ship will need to pass very close to the shore at this point to miss the tail end of the Swelly Rock. Craft drawing less than about 3m will be able to pass over the tail end of the rock at high water slack.