



## PORT & HARBOUR DUES (PORTLAND INNER HARBOUR)

The Portland Harbour Revision Order 1997 established Portland Port Ltd as the statutory Harbour Authority for Portland Harbour. It defined the limits of jurisdiction of Portland Port and conferred on them the power of control, operation, management and regulation in relation to the harbour and harbour premises.

The order provided for the development and for the safe and efficient operation of the commercial port; for the harbour conservancy and maintenance; for the conservation of the natural beauty of the harbour and its flora and fauna.



Port and Harbour dues are levied to fulfil some of this criteria; namely, to provide a safe harbour; to contribute towards the enormous cost of maintaining the extensive breakwaters without which a safe harbour would not exist; to ensure that all recreational users are aware of the regulations and adhere to them so that diverse activities can co-exist.



## PORTLAND HARBOUR RADIO VHF Channel 74

Portland Harbourmaster  
01305 824044

Weymouth Harbourmaster  
01305 838423

Portland Coastguard  
01305 760439

HM Customs - Poole  
01202 685157

Portland Marina  
08454 30 2012



PORTLAND HARBOUR  
AUTHORITY

Castletown, Portland, Dorset, DT5 1PP  
United Kingdom

Tel: +44 (0) 1305 824044  
Fax: +44 (0) 1305 824055



## PORTLAND HARBOUR AUTHORITY



Castletown  
Portland  
Dorset  
DT5 1PP  
United Kingdom

Visit our website at:  
**[www.portland-port.co.uk](http://www.portland-port.co.uk)**

Tel: +44 (0) 1305 824044  
Fax: +44 (0) 1305 824055





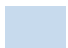
PORTLAND HARBOUR  
AUTHORITY

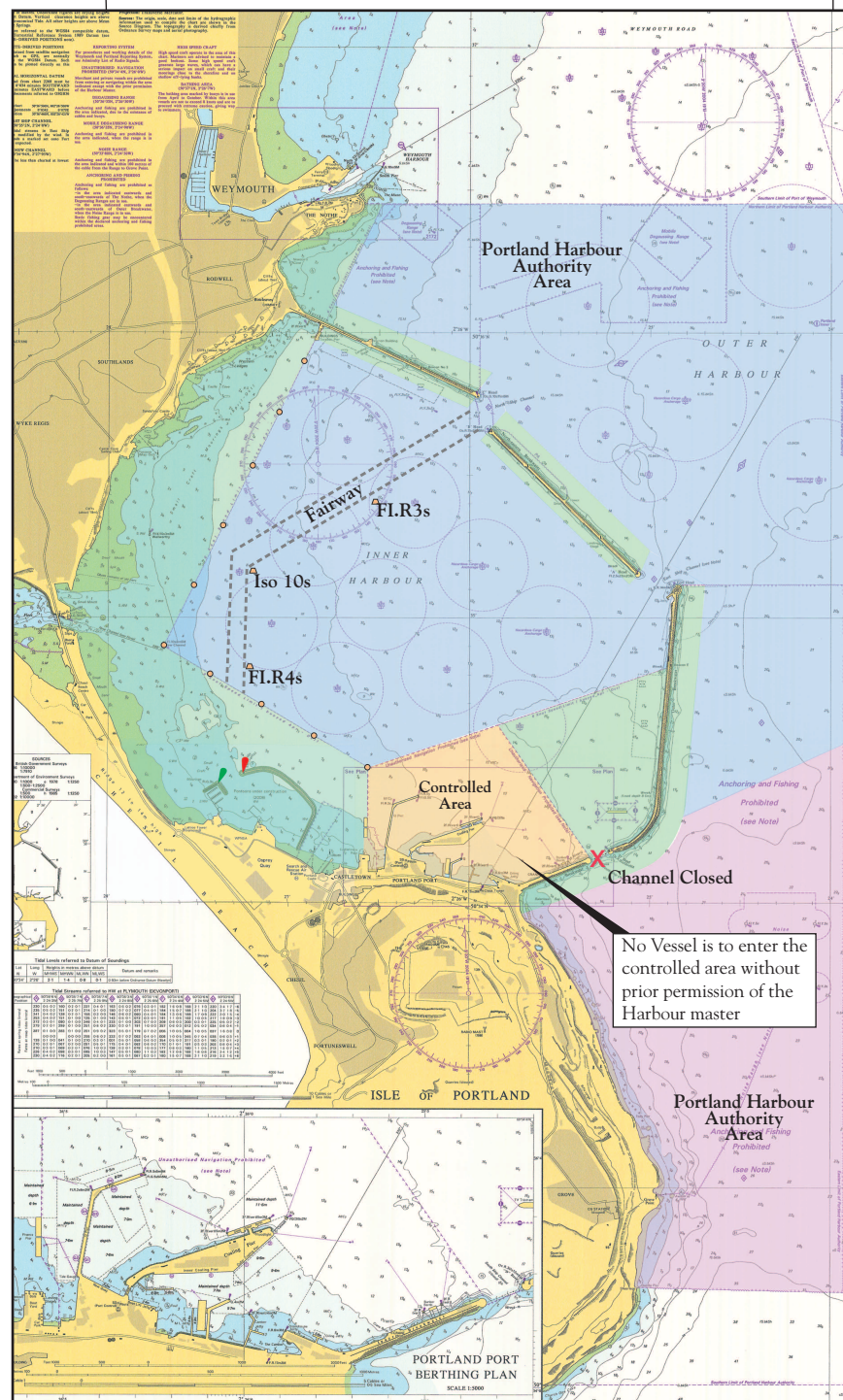
## SAFETY INSTRUCTIONS

1. All non-commercial vessels should enter/exit the inner harbour via the north ship channel and follow the fairway.
2. South ship channel is closed to all vessels.
3. Commercial shipping has priority within the harbour limits.
4. PWC may launch at Ferrybridge and must keep to the designated channel/fairway until clear of the inner harbour.
5. No fishing by any method is to take place in the controlled area, main fairways or within 150 metres of the breakwater.
6. Water skiing/wakeboarding/towing toys require a permit from Portland Harbour Authority.
7. Kite surfing and similar activities require a permit from Portland Harbour Authority.
8. Access and egress from the marina may be restricted at certain times obey marina traffic signals.
9. All movements of vessels to and from the marina are to use the fairway.

**All users of the harbour are to take direction from Harbour Authority vessels.**

## OBEY THE HARBOUR SPEED LIMITS.

-  No power driven vessel shall proceed greater than 6 knots in these areas.
-  No power driven vessel shall proceed greater than 6 knots in this area.
-  No power driven vessel shall proceed greater than 12 knots in these areas unless under 10 metres.



*Not to be used for navigation*

© Crown copyright and/or database rights. Reproduced from Admiralty chart 2268 by permission of the Controller of HMSO and the UK Hydrographic Office. ([www.ukho.gov.uk](http://www.ukho.gov.uk))



PORTLAND HARBOUR  
AUTHORITY

## PORT TRAFFIC SIGNALS

All vessels navigating in the vicinity of the breakwater entrances should navigate with particular caution and adhere to the port traffic signals at all times.



### All lights flashing Red

Entrance closed – await instructions from Portland Harbour Radio (VHF CH 74).



### Fixed Red

A commercial vessel is departing the Inner Harbour.

No other vessel is to approach in such a way as to impede the safe passage of that vessel.



### Fixed Green

A commercial vessel is entering the Inner Harbour.

No other vessel is to approach in such a way as to impede the safe passage of that vessel.

## MARINA TRAFFIC SIGNALS

All vessels navigating in the vicinity of the Marina and Marina breakwater should navigate with particular caution and adhere to the Marina traffic signals at all times.



### All lights flashing Red

All vessels await instructions. Entrance closed await instructions from Marina Control (VHF CH 80).



### Fixed Red

Sailing vessels are departing the Sailing Academy.

No other vessel is to approach in such a way as to impede the safe passage of these vessels.



### Fixed Green

Sailing vessels approaching the Sailing Academy.

No other vessel is to approach in such a way as to impede the safe passage of these vessels.

## NATURE & THE ENVIRONMENT

Users of the harbour are requested to help maintain water quality by ensuring that no wastes go into the water. Consider wildlife - please avoid disturbance if at all possible.